

Wandleuchten
Wall Lights





MSW 27
Wandleuchte
Design: Mart Stam 1927.

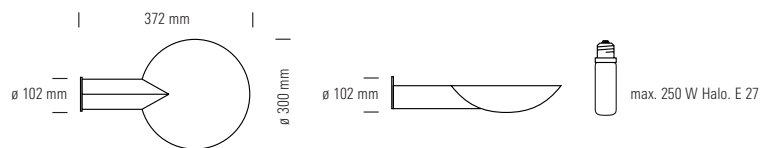
Material:
MSW 27 Ni matt
Messing matt vernickelt.

MSW 27 Ni pol.
Messing poliert und
vernickelt.

MSW 27
Wall fixture
Design: Mart Stam 1927.

Material:
MSW 27 Ni matt
Matt brushed nickel plated
brass.

MSW 27 Ni pol.
Polished nickel plated
brass.





WAD 37

Art Déco-Wandarm
Design:
E. Muthesius, 1930.

Material:

WAD 37 CSW

Metall verchromt,
Holz schwarz lackiert.

WAD 37 MM

Metallteile Messing poliert
und zaponiert.
Holz Mahagoni.

WAD 37

Art Déco bracket
Design:
E. Muthesius, 1930.

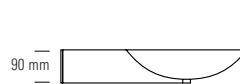
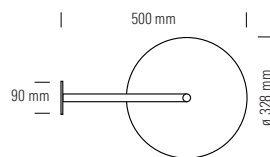
Material:

WAD 37 CSW

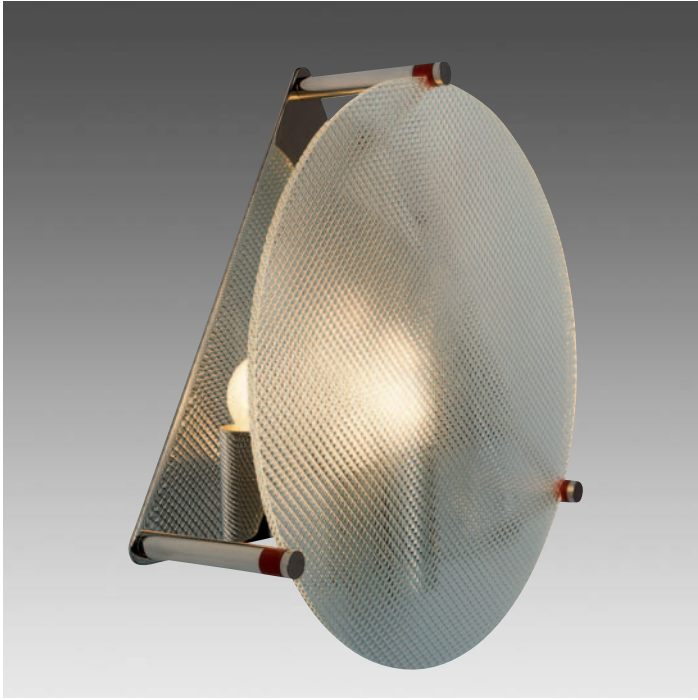
Chrome plated metal,
black lacquered wood.

WAD 37 MM

Metal parts brass,
mahogany wood.



max. 250 W Halo. E 27

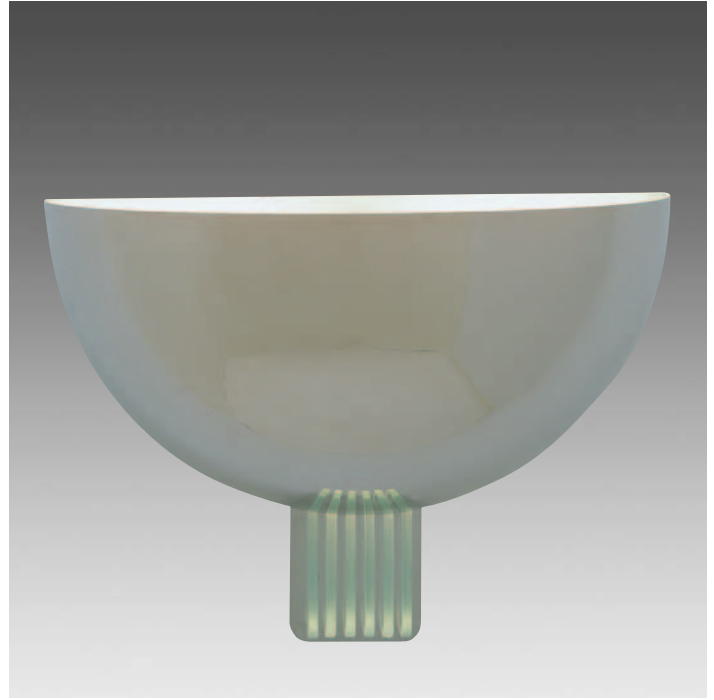
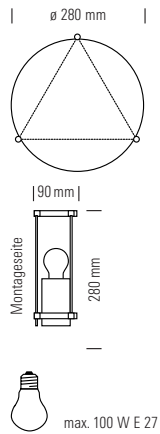


WBT 77
Wand-/Deckenleuchte
Design:
Benedict Tonon, 1977.

Material:
Messing vernickelt,
Glas.

WBT 77
Bracking or ceiling lamp
Design:
Benedict Tonon, 1977.

Material:
Nickel plated brass,
glass.



WAD 31
Art Déco-Wandleuchte
Design:
Frankreich um 1930.

Material:
WAD 31 Ni
Neusilber poliert.

WAD 31 W
Aluminium weiß lackiert.

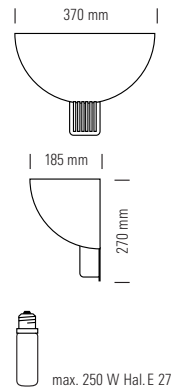
WAD 31 Alu
Aluminium mattiert.

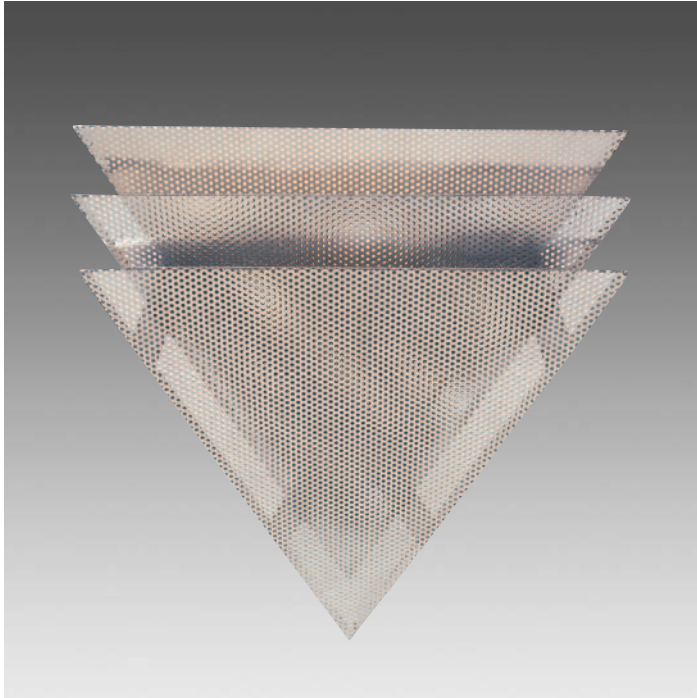
WAD 31
Art Déco wall fixture
Design:
France about 1930.

Material:
WAD 31 Ni
Polished nickel silver.

WAD 31 W
Aluminium, lacquered
white.

WAD 31 W
Aluminium brushed.





WKB 84

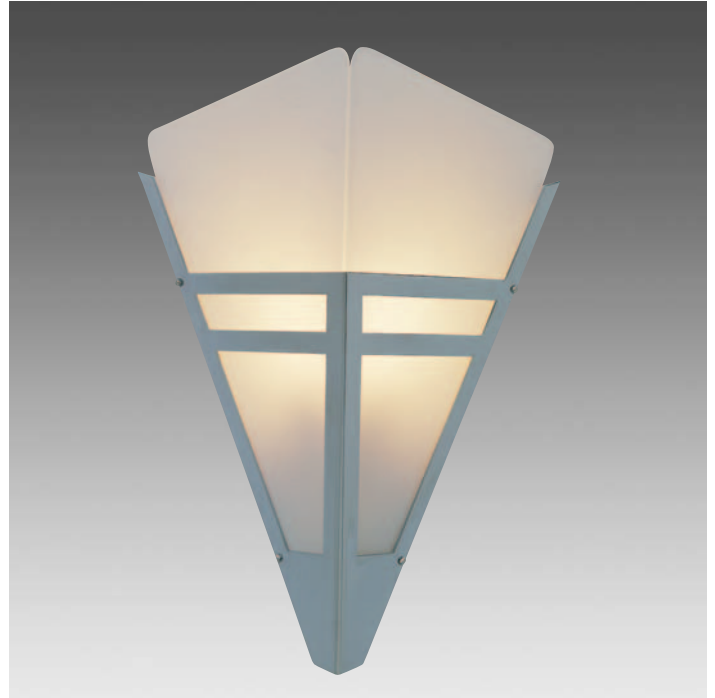
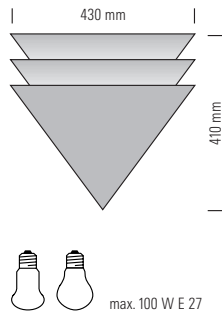
Eckleuchte aus Lochblech
Design:
Klaus Brand, 1984.

Material:
Lochblech poliert
und vernickelt,
opaler Kunststoff.

WKB 84

Corner lamp made of
perforated metal plates
Design:
Klaus Brand, 1984.

Material:
Sheet metal nickel plated,
opaque synthetic.



WAD 36

Art Déco-Wandleuchte
Design:
Rosi Findeisen und
Jo Kähne, 1980.

Material:
WAD 36 Chr
Metall verchromt,
Opalglas.

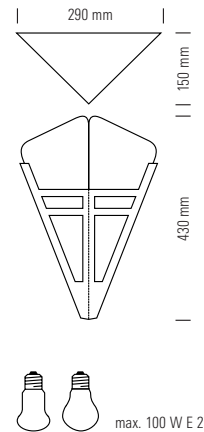
WAD 36 M
Metallteile Messing poliert
und zaponiert, Opalglas.

WAD 36

Art Déco wall fixture
Design:
Rosi Findeisen and
Jo Kähne, 1980.

Material:
WAD 36 Chr
Chrome plated metal,
opaque glass.

WAD 36 M
Metal parts brass,
opaque glass.



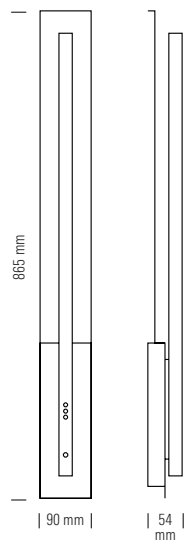


WLS 96
Wandleuchte
Design:
Thomas Schultz, 1996.

Material:
Edelstahl matt gebürstet.

WLS 96
Wall fixture
Design:
Thomas Schultz, 1996.

Material:
Stainless steel mat
brushed.



FM11, 13 W, ø 7 mm



WLBH 24
Design:
Bauhaus-Entwurf, 1924.

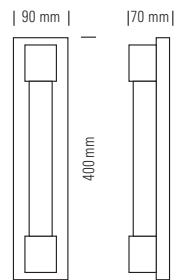
Material:
WLBH 24 OP
Edelstahl gebürstet,
Kunststoff.
Soffitten-Lampe, opal.

WLBH 24 SP
Edelstahl gebürstet,
Kunststoff. Soffitten-
Lampe, halbversiegelt.

WLBH 24
Design:
From the Bauhaus, 1924.

Material:
WLBH 24 OP
Stainless steel mat
brushed, plastic.
Opaque soffitten lamp.

WLBH 24 SP
Stainless steel
mat brushed, plastic.
Soffitten lamp.



1 x 60 W Soffite, S 19, ø 38 mm



WLZ 91

Wandleuchte „Ariane“
Design:
ZENO, 1991.

Material:
Edelstahl matt gebürstet.
Kunststoffrohr,
mit dimmbarem elektro-
nischem Trafo.

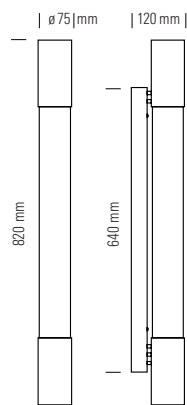
NUR SENKRECHTE
MONTAGE!

WLZ 91

Wall fixture „Ariane“
Design:
ZENO, 1991.

Material:
Stainless steel mat
brushed, synthetic tube,
with electronical
transformer for dimmer.

ONLY FOR VERTICAL USE!



WLZ 94

Wandleuchte „Selene“
Design:
ZENO, 1994.

Material:
Edelstahl matt gebürstet.
Kunststoffrohr,
mit dimmbarem elektro-
nischem Trafo.

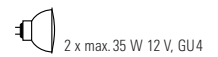
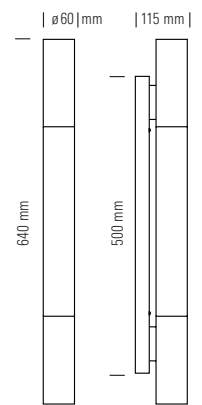
NUR SENKRECHTE
MONTAGE!

WLZ 94

Wall fixture „Selene“
Design:
ZENO, 1994.

Material:
Stainless steel mat
brushed, synthetic tube,
with electronical trans-
former for dimmer.

ONLY FOR VERTICAL USE!





UL 40 W

U-Boot-Leuchte

Design:

Für die US-Navy um 1940.

Wandleuchte.

Material:

UL 40 W Chr

Metall verchromt.

UL 40 W M

Messing poliert und
zaponiert.

UL 40 W

Submarine berth lamp

Design:

For the US-Navy about 1940.

Wall lamp.

Material:

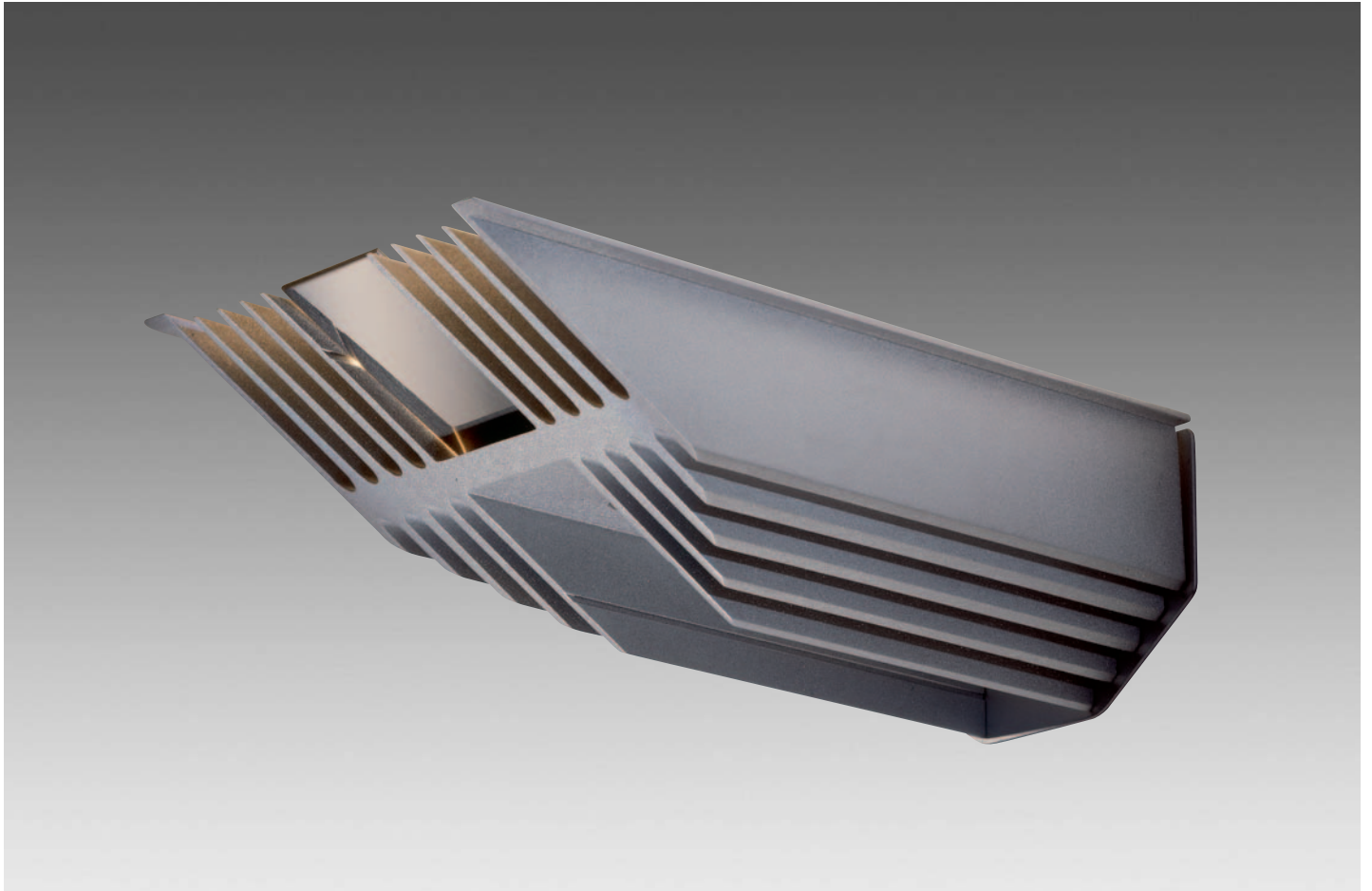
UL 40 W Chr

Chrome plated metal parts.

UL 40 W M

Polished and varnished
brass.



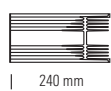


WLZ 98
Wandleuchte Helios 3
Design:
ZENO, 1998.

Material:
Aluminium matt.

WLZ 98
Wall fixture Helios 3
Design:
ZENO, 1998.

Material:
Aluminium mat.



250 W Hal. B15d



WNVT 85

Reflektor-Wandleuchte,
verstellbar

Design:
Nikol Voigtländer-Tetzner,
1985.

Material:

WNVT 85 Ni

Messing vernickelt.

WNVT 85 M

Messing poliert und
zaponiert.

WNVT 85

Adjustable reflector wall
fixture

Design:
Nikol Voigtländer-Tetzner,
1985.

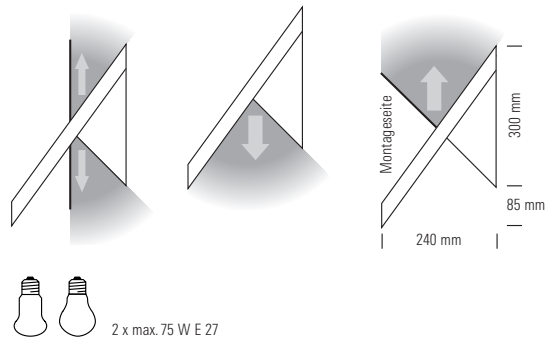
Material:

WNVT 85 Ni

Nickel plated brass.

WNVT 85 M

Brass, polished and
varnished.





WKS 94

Wandleuchte

Design:

Thomas Schultz und
Henning Krohn, 1994.

Material:

Edelstahl matt gebürstet.

WKS 94

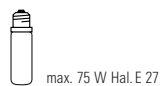
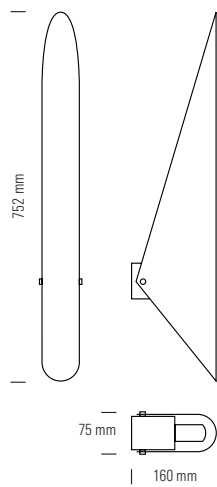
Wall fixture

Design:

Thomas Schultz and
Henning Krohn, 1994.

Material:

Stainless steel mat
brushed.



WLZ 92

Wandleuchte „Afrique“

Design:

ZENO, 1992.

Material:

WLZ 92 BL

Edelstahl poliert, blaues
Glas, mit dimmbarem
elektronischem Trafo.

WLZ 92 Red

Edelstahl poliert, rotes
Glas, mit dimmbarem
elektronischem Trafo.

Weitere Farbgläser auf
Anfrage!

WLZ 92

Wall fixture „Afrique“

Design:

ZENO, 1992.

Material:

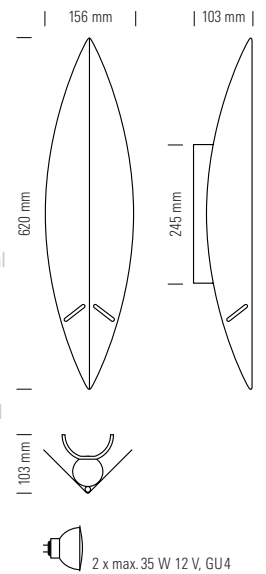
WLZ 92 BL

Polished stainless steel,
blue glass, with electronical
transformer for dimmer.

WLZ 92 Red

Polished stainless steel,
red glass, with electronical
transformer for dimmer.

Further glass colours
on inquiry!



Tecnolumen GmbH & Co. KG

Postanschrift:

Postfach 110528, D-28085 Bremen

Lieferanschrift:

Lötzener Str. 2–4, D-28207 Bremen

Telefon (0421) 43 04 17-0

Telefax (0421) 4 98 66 85

www.tecnolumen.de

info@tecnolumen.de