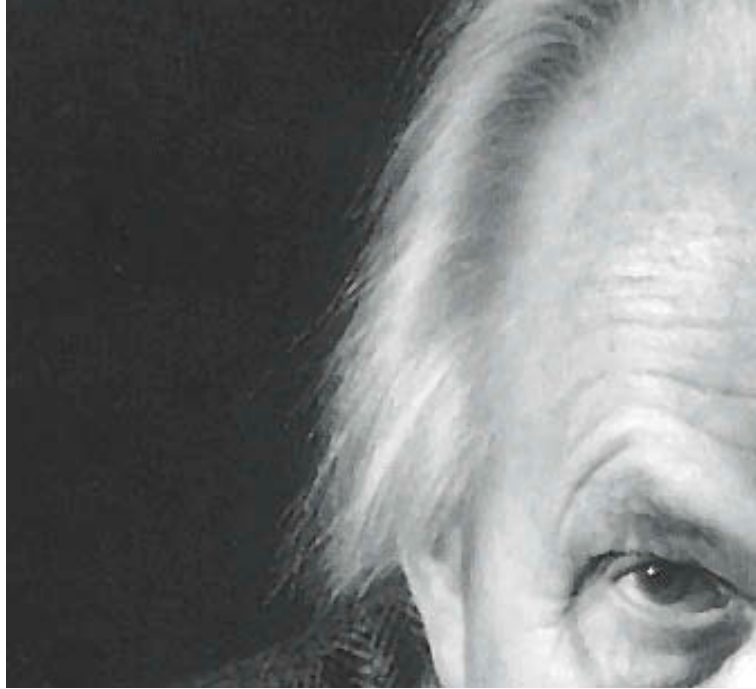


*Piet Hein*

PURE GENIUS





# PURE GENIUS

Piet Hein was one of a kind, and he was friend with such diverse types as Albert Einstein and Charles Chaplin. Through his life he balanced elegantly between the subjective world of arts and factual sciences. He was called a poetic architectural designer and was compared to Leonardo da Vinci for his skills as a Universalist in diverse genres such as scientific writings, essays, poetry, and architecture. "Art is the solution to problems which cannot be formulated clearly before they are resolved", said Piet Hein.

In 1959 Piet Hein decided to invent a novel absolute physical form, which is something of an achievement, considering most of our basic mathematics is several thousand years old. He wanted to resolve the ancient conflict between the orthogonal shape and the round shape. The creation of the SuperEllipse was the solution to a very specific problem, namely Sergels Torg: a 200 meter long square that was built in central Stockholm, where two highways meet in a "roundabout". Piet Hein was asked to help designing it. The formula was calculated on a computer, which was at a very early stage of today's computer technology.

Since then, the unique shape has been used in various places all over the world - in residential areas and athletic facilities such as the Olympic Stadium in Mexico City and the swimming pool of DGI-byen in Copenhagen. Also in a much smaller scale - but with a huge spread - Piet Hein's unique super-elliptical shape has been used, particularly in the design of bowls and handles, and not least the famous dinner table, where there are no hard corners and the space is maximized. "Who need corners?", asked Piet Hein, and continued: "- apart from those on the handkerchief, which may become useful from time to time."

Piet Hein design products are all labelled with Piet Hein's signature as the logo out of the simple reason that all products have been developed from the heavy data Piet Hein left behind. It is common to all of his ideas on products that they should have a purpose other than just being aesthetic; therefore the series consists of not only beautifully designed products, they do all have specific characteristics justifying their presence.





ORIGINAL



# ORIGINAL

The original candlestick series reflects Piet Hein's ideas and philosophies.

During a stay on the southern part of the globe, Piet Hein missed seeing The Big Dipper on the sky. It inspired him to design a candlestick, which could bring his thoughts towards Denmark and Scandinavia.

This is the idea behind the candlestick that is produced in an elegant Scandinavian design and in a well-known fine quality.






BIGGER & SMALLER



The classic candlestick is available in three sizes of exact proportional dimensions. MINI candlesticks are only 52% of the original candlestick size, while the MAXI candlestick has grown with 225%. The measurable difference between the smallest MINI candlestick and the biggest MAXI candlestick is a whole of 72.8 cm.



A black, glossy, rounded vase filled with white flowers and green leaves. In the foreground, a white, shallow bowl sits on a light-colored surface. The background is a bright, out-of-focus window with a decorative pattern. The text "FRAGILE ELEGANCE" is centered over the vase.

FRAGILE ELEGANCE





# GLASS ART

The glass art series comprises 77 vases and bowls. The colours ranging from orange, red, black, and white to crystal clear glass make the design perfect to contain anything from e.g. beautiful long-stemmed flowers in a vase to small delicious olives in a beautiful glass bowl.





BLACK LABEL




# SCULPTURAL

The shape provides the same distinguished and balanced pattern regardless of application. Not quadrangular. Not round.

Like a structure, plates are stacked on top of each other and form a systematic and harmonious image.

It is pure sculptural tableware adding the serve and the buffet an extra dimension of exclusivity.





WHITE LABEL



A person is shown from the waist down, wearing a grey t-shirt and dark pants, chopping vegetables on a wooden cutting board. The background is bright and slightly blurred, showing a kitchen counter with various vegetables like tomatoes and leafy greens. In the foreground, a stack of four white ceramic bowls is visible, slightly out of focus. The text "COOK AND FREEZE" is overlaid in the center of the image.

COOK AND FREEZE



# SCULPTURAL

The dishes have an extra high brim, which makes it possible to bring them straight from the oven onto a well-laid table – as the sauce does not go beyond the brim. The well-cooked courses can be arranged deliciously in the dishes where there is plenty of room.



# OVERVIEW





Mars no. 10061  
8,2 cm tall



Venus no. 10062  
12,5 cm tall



Jupiter no. 10063  
17,3 cm tall



Saturn no. 10064  
21,5 cm tall



The Big Dipper no. 10060  
36,5 cm tall



Seasonal candlestick no. 958027  
4 candles



Multi candlestick no. 958022  
Matte polished steel 6 cm



Mars no. 958011  
15 cm tall



Venus no. 958012  
21 cm tall



Jupiter no. 958013  
30 cm tall



Saturn no. 958014  
36 cm tall



The Big Dipper no. 958008  
63 cm tall



Merkur no. 12061  
One-arm wall candlestick



Orion no. 12063  
Three-arm wall candlestick



Mars no. 958041  
32 cm tall



Venus no. 958042  
48 cm tall



Jupiter no. 958043  
65 cm tall



Saturn no. 958044  
81 cm tall



The Big Dipper no. 958000  
150 cm tall



Cuff no. 10065  
MINI candlestick



Cuff no. 958016  
MEDIUM candlestick



Cuff no. 958018  
MAXI candlestick



no. 81601  
Ø 10 cm



no. 81603  
Ø 14 cm



no. 81606  
Ø 18 cm



no. 81608  
Ø 21 cm



no. 81610  
Ø 26 cm



no. 81501  
Ø 10 cm



no. 81503  
Ø 14 cm



no. 81506  
Ø 18 cm



no. 81508  
Ø 21 cm



no. 81510  
Ø 26 cm



no. 81401  
Ø 10 cm



no. 81403  
Ø 14 cm



no. 81406  
Ø 18 cm



no. 81408  
Ø 21 cm



no. 81410  
Ø 26 cm



no. 81201  
Ø 10 cm



no. 81203  
Ø 14 cm



no. 81206  
Ø 18 cm



no. 81208  
Ø 21 cm



no. 81210  
Ø 26 cm



no. 81301  
Ø 10 cm



no. 81303  
Ø 14 cm



no. 81306  
Ø 18 cm



no. 81308  
Ø 21 cm



no. 81310  
Ø 26 cm



no. 81101  
Ø 10 cm



no. 81103  
Ø 14 cm



no. 81106  
Ø 18 cm



no. 81108  
Ø 21 cm



no. 81110  
Ø 26 cm



no. 81001  
Ø 10 cm



no. 81003  
Ø 14 cm



no. 81006  
Ø 18 cm



no. 81008  
Ø 21 cm



no. 81010  
Ø 26 cm



no. 85602  
10 cm tall



no. 85601  
16 cm tall



no. 85603  
20 cm tall



no. 85606  
25 cm tall



no. 85608  
30 cm tall



no. 85609  
50 cm tall



no. 85402  
10 cm tall



no. 85401  
16 cm tall



no. 85403  
20 cm tall



no. 85406  
25 cm tall



no. 85408  
30 cm tall



no. 85409  
50 cm tall



no. 85502  
10 cm tall



no. 85501  
16 cm tall



no. 85503  
20 cm tall



no. 85506  
25 cm tall



no. 85508  
30 cm tall



no. 85509  
50 cm tall



no. 85102  
10 cm tall



no. 85101  
16 cm tall



no. 85103  
20 cm tall



no. 85106  
25 cm tall



no. 85108  
30 cm tall



no. 85109  
50 cm tall



no. 85302  
10 cm tall



no. 85301  
16 cm tall



no. 85303  
20 cm tall



no. 85306  
25 cm tall



no. 85308  
30 cm tall



no. 85309  
50 cm tall



no. 85002  
10 cm tall



no. 85001  
16 cm tall



no. 85003  
20 cm tall



no. 85006  
25 cm tall



no. 85008  
30 cm tall



no. 85009  
50 cm tall



no. 85202  
10 cm tall



no. 85201  
16 cm tall



no. 85203  
20 cm tall



no. 85206  
25 cm tall



no. 85208  
30 cm tall



no. 85209  
50 cm tall



no. 20705  
Soup plate



no. 20704  
Dessert plate



no. 20703  
Lunch plate



no. 20701  
Dinner plate



no. 198800 – 160x220 cm  
no. 198802 – 160x270 cm  
no. 198804 – 160x320 cm



no. 958055  
Silicone trivet



Pepper shaker no. 10027  
Salt shaker no. 10026  
Polished stainless steel 4.50 cm tall



Tray for salt-/peber shakers no. 958026  
Polished stainless steel incl. removable rubber mat



Twin Bowl Ø 10 cm no. 10053  
Polished stainless steel



Serving Tray no. 148028  
41x31 cm



Bowl Ø 8 cm no. 10045  
Bowl Ø 15 cm no. 10044  
Polished stainless steel



no. 20505  
Soup plate



no. 20504  
Dessert plate



no. 20503  
Lunch plate



no. 20501  
Dinner plate



no. 198830 – 160x220 cm  
no. 198832 – 160x270 cm  
no. 198834 – 160x320 cm





SuperEgg no. 221455  
Polished stainless steel - 3 cm tall



Drink cooler no. 227340  
Polished stainless steel with liquid cooling - 3 cm tall



Cap opener no. 10025  
Polished stainless steel - to cap or screw cap



Credit card holder no. 140105  
Polished stainless steel



Con-Tac-Tix no. 30140  
Board game in mahogany wood



Pepper mill no. 958024  
Salt mill no. 958025  
Polished stainless steel



Soma cube no. 30182  
Puzzle game in Acacia wood



Table flagpole 25 cm no. 10092  
Table flagpole 35 cm no. 10091  
Table flagpole 50 cm no. 958028  
Polished steel with DK flag



Cutting Board no. 246510  
Teak 35 l. x 28 w. x 2.8 h. cm



Cutting Board no. 246515  
Teak 45 l. x 36 w. x 2.8 h. cm



Chopping block no. 246520  
Teak Ø 26 x 4.7 h. cm



Floor flagpole 170 cm no. 10090  
Polished steel with DK flag



# QUALITY

**WOOD** Piet Hein timber is produced in the best quality.

**SILICONE** Piet Hein table mat produced in black silicone able to handle extreme temperatures ranging from -80° to +300° Celsius.

**OPAL GLASS** All coloured glass products are hand-blown opal glass, which - by its milky-white opaque mass - provides a beautiful contrast with the exterior colour. This layer of colour is composed of its own solid coloured glass.

**GLASS** All crystal clear glass products are hand-blown and made of crystal clear glass quality.

**PORCELAIN** Piet Hein porcelain used for tableware, dishes, and bowls are strong and durable – burned at min. 1430° Celsius. It withstands coming directly from freezer to hot oven, with freezing temperatures down to -30° Celsius and hot oven up to +360° Celsius, which makes it ideal for microwave use. The glaze is lead-free which provides a strong and hard glaze making it very resistant to scratches.

**STEEL** Piet Hein uses only the best 18/10 stainless steel. CANDLESTICKS: hand-polished in satin finish. SHAKERS: hand-polished glossy finish. SUPEREGG/DRINK COOLER: hand-polished glossy finish. CREDIT CARD HOLDER: hand-polished sandy finish.

**TEXTILE** Piet Hein cloths are produced in 100% cotton STAINCOAT® with liquid- and dirt-repellent protection from Södahl Textiles.

PURE GENIUS